

WATER JETTING

# AOKPI INDUSTRY



2022 PRODUCT CATLOG



## **HIGH PRESSURE PUMP** **WATER JETTING TOOLS** **HIGH PRESSURE WASHER**

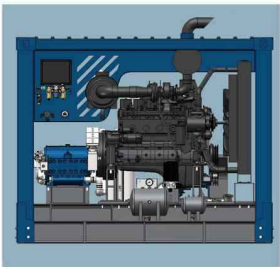
*MANUFACTURER OF WATER BLASTING TOOLS & ACCESSORIES*



# Brief Introduction

Aokpi Industry Co.,Ltd. is a professional pumping solution provider, ranging from high pressure plunger pump, high pressure washer, centrifugal pump, oil pump and valves, to casting and machining of OEM parts of pump and valves. It is committed to provide integrated pumping solutions to suit the customized needs of clients in oil & gas industry, water jetting industry, and infrastructure sector.

It is composed of a manufacturing factory and one sales center. It's a member of Waterjet Technology Association (WJTA). It has a professional and trusted team to serve the global customers, and is experienced enough to manufacture, repair and refurbish all types of pumps, which wins high evaluation among domestic and international customers based on its efficient communication, and its extensive supply scope, prompt after sale service, and abundant technology.



# CROKPI INDUSTRY CO.,LTD.

# CONTENTS

## A.PUMPS

A.1 F15 Pump.....	A-01
A.2 F26 Pump.....	A-02
A.3 F1502 Pump.....	A-03
A.4 F150B Pump.....	A-04
A.5 F200Q Pump.....	A-05
A.6 F90 Pump.....	A-06
A.7 F132G Pump.....	A-07
A.8 F200 Pump.....	A-08

## C. HIGH PRESSURE SPRAY GUN

C.1 SG2800B .....	C-01
C.2 SG1600B .....	C-01
C.3 SG1600CA .....	C-01
C.4 SG1000 .....	C-02
C.5 SG1000CA .....	C-02
C.6 SG500 .....	C-02

## D. HIGH PRESSURE FOOT VALVE

D.1 FV3000B .....	D-01
D.2 FV1600B .....	D-01
D.3 FV1500C .....	D-01
D.4 FV1000B .....	D-02
D.5 FV1000C .....	D-02

## E. SELF-ROTATING NOZZOES DESIGN FOR INTERNAL TUBE CLEANING

E.1 RBD 11/14/17/20/25 Nozzles.....	E-01
E.2 RT11/13/15/20/25 Nozzles.....	E-02

## F.SURFACE CLEANING AND PREPARATION

F.1 RWT-OS-16-2.....	F-01
F.2 RWT-OS-18-4.....	F-01
F.3 RWT-OF-28-4.....	F-01
F.4 RWT-OF-30-3.....	F-01
F.5 RWT-OF-30-4.....	F-02
F.6 RWT-OF-32-4.....	F-02

## G.INTERNAL PIPE CLEANING

G.1 S22/S29/S35/S44.....	G-01
G.2 S25/S40/S55.....	G-01
G.3 FC55/FC70/FC90/SR88.....	G-01
G.4 BENDING PIPE CLEANING.....	G-02
G.5 FALCON SERIES CENTRALIZERS.....	G-02

## H.TANK CLEANING NOZZLE

H.1 3DUP-1600.....	H-01
H.2 3DUP-500.....	H-01
H.3 3DP-10.....	H-02

## I.SEWER CLEANING NOZZLES

I.Sewer Cleaning Nozzles.....	I-01
-------------------------------	------

## J.NOZZLES PARTS

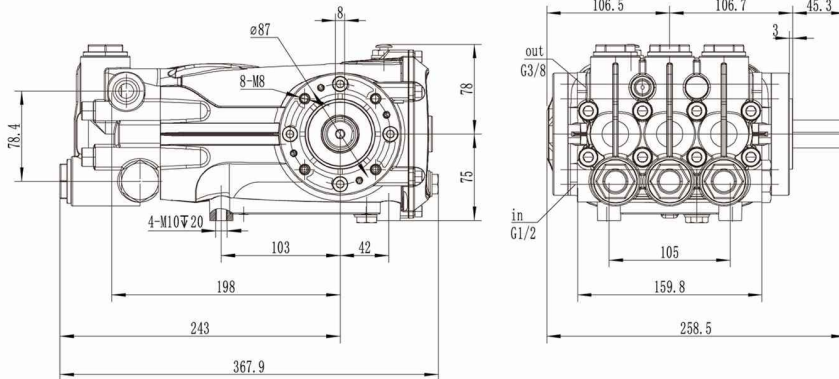
J.Nozzles Parts.....	J-01
----------------------	------

## Z.TECHNICAL

Z.1 Nozzle Orifice Chart.....	Z-01
Z.2 Formula & Unit Conversion.....	Z-02



**F15**

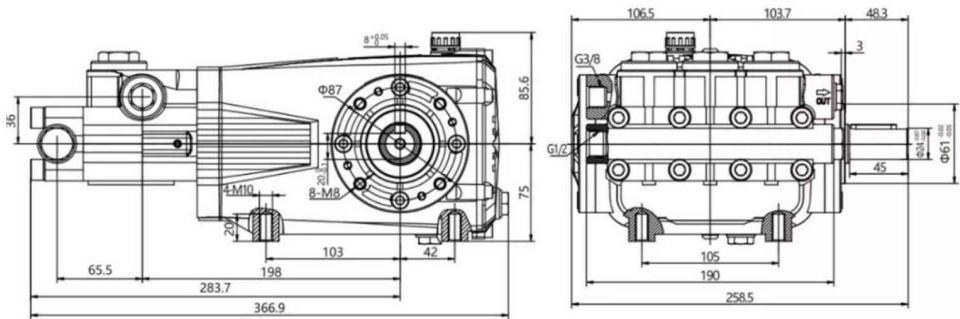


Plunger Diameter	Gear Ratio (Input Speed)			Crank Shaft	Required Drive	Nominal Flow Rate		Maximum Permissible Working Pressure		
	mm	1450	1800			2100	RPM	KW	USG pm	L/MIN
P18	1.00				1450	15.0	5.8	22	5,000	350
P28	1.00				1450	15.0	7.9	30	3,600	250
P28	1.00				1450	15.0	10.6	40	2,900	200
P28	1.00				1450	15.0	13.7	52	2,175	150

Netweight:20.0KG Inlet Port:G 1/2" Outlet Port:G 3/8"

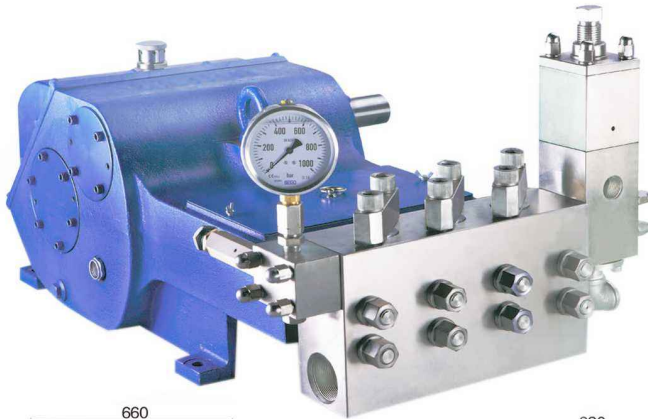


# F26

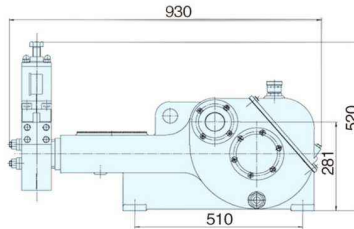
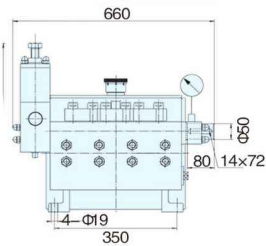


Plunger Diameter	Gear Ratio (Input Speed)			Crank Shaft	Required Drive	Nominal Flow Rate		Maximum Permissible Working Pressure		
	mm	1450	1800			2100	RPM	KW	USG pm	L/MIN
1280	1.00				1450	22	3.2	12	11,600	800
1680	1.00				1450	25	4.2	16	11,600	800
2280	1.00				1450	35	5.8	22	11,600	800
2260	1.00				1450	26	5.8	22	8,700	600
2250	1.00				1450	22	5.8	22	7,250	500
3050	1.00				1450	28	7.4	28	7,250	500
4020	1.00				1450	15	10.0	38	2,900	200
5215	1.00				1450	15	13.5	51	2,175	150

Netweight:21.0KG Inlet Port:G 1/2" Outlet Port:G 3/8"

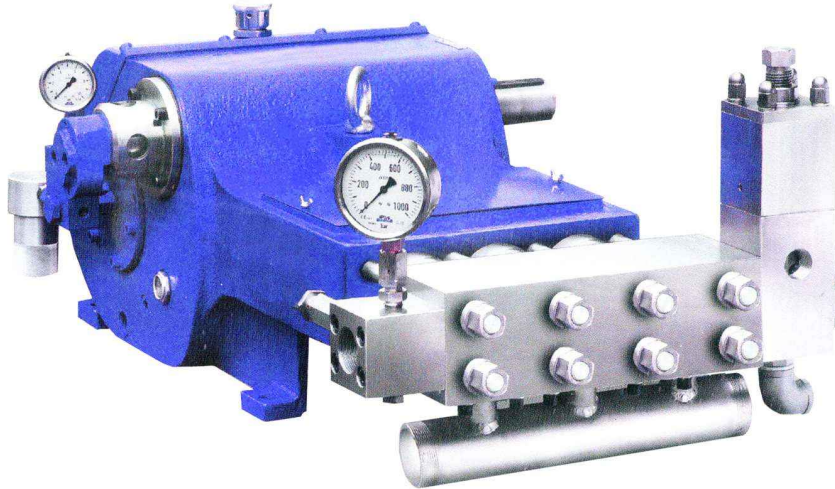


**F1502**

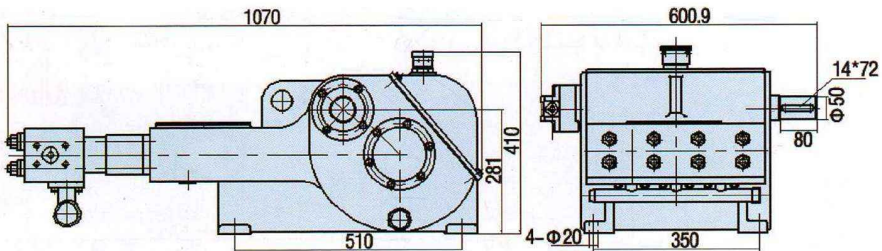


Plunger Diameter	Gear Ratio (Input Speed)			Crank Shaft	Required Drive	Nominal Flow Rate		Maximum Permissible Working Pressure	
	mm	1480	1800			2100	RPM	KW	USG pm
P22	3.65			405	37	10.6	40	6,700	460
	2.95			500	75	13.2	50	10,000	700
P24	2.96			500	75	15.9	60	8,800	610
P25	2.96			500	75	18.5	70	7,250	500
P26	2.96			500	75	18.5	75	7,250	500
P28	2.95			500	75	21.1	80	7,000	480
P30	3.65			405	90	19.8	85	7,250	500
	2.95			500	90	25.1	95	7,250	500
P32	2.95			500	90	27.7	105	6,500	450
P35	2.95			500	90	33.0	125	5,200	360
P40	3.65			405	90	35.7	135	4,800	330
P45	3.65			405	90	44.9	170	4,000	280
	2.95			500	90	56.8	215	3,200	220
P50	2.95			500	90	66.1	250	2,500	170

Netweight:370KG Inlet Port:G 2" Outlet Port: ZG 1"

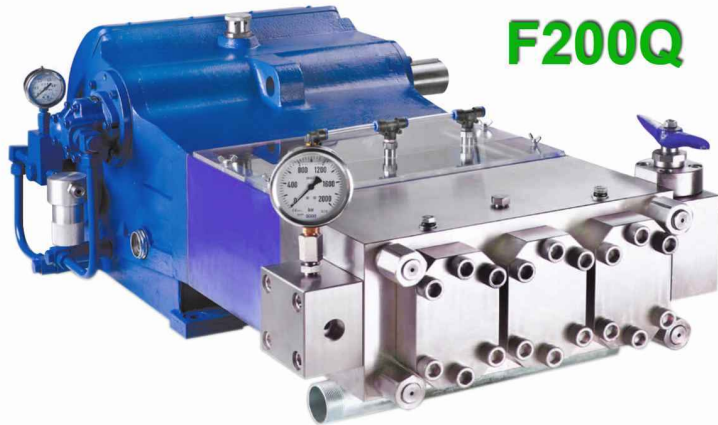


# F150B

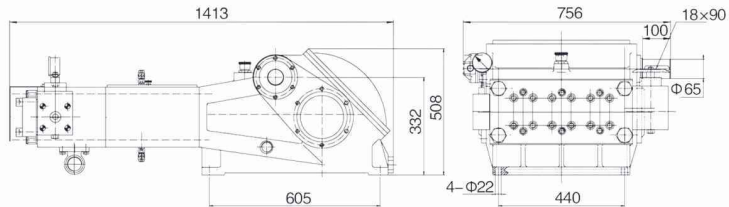


Plunger Diameter	Gear Ratio (Input Speed)			Crank Shaft	Required Drive	Nominal Flow Rate		Maximum Permissible Working Pressure		
	mm	1450	1800			2100	RPM	KW	USG pm	L/MIN
P20	4.45				332	45	7.9	30	10,875	750
P22	4.45				332	55	9.8	37	10,875	750
P26	4.45				332	75	13.7	52	10,875	750
P28	4.45				332	90	15.9	60	10,875	750
P30	4.45				332	90	18.5	70	10,000	700
P32	4.45				332	90	21.1	80	8,700	600
P3X	4.45				332	90	25.1	95	7,250	500
P45	4.45				332	90	41.7	158	4,300	300
P50	4.45				332	90	51.5	195	3,300	230
	3.74				395	90	61.6	233	2,700	190

Netweight:385KG Inlet Port:G 2" Outlet Port:ZG 1"



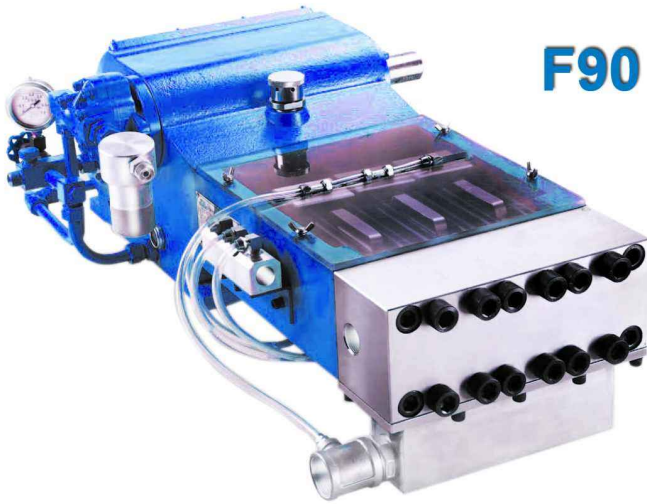
**F200Q**



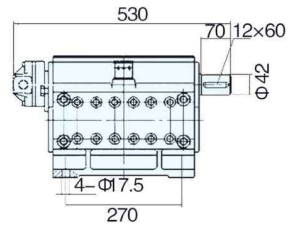
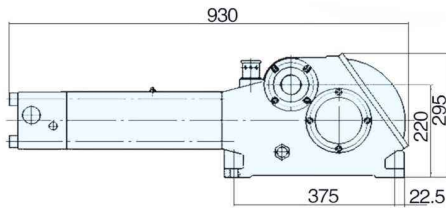
Plunger Diameter	Gear Ratio (Input Speed)			Crank Shaft	Required Drive	Nominal Flow Rate		Maximum Permissible Working Pressure		
	mm	1480	1800			2100	RPM	KW	USG pm	L/MIN
P22	4.04				366	110	13.2	50	17,000	1,200
P24	4.04				366	110	15.9	60	150,00	1,000
P26	4.04				366	132	18.5	70	15,000	1,000
P28	4.04				366	160	21.1	80	15,000	1,000
P30	4.04				366	160	24.6	93	13000	900

Netweight:780KG Inlet Port:ZG 2" Outlet Port: M30 \* 2(or M24\*1.5 24°)



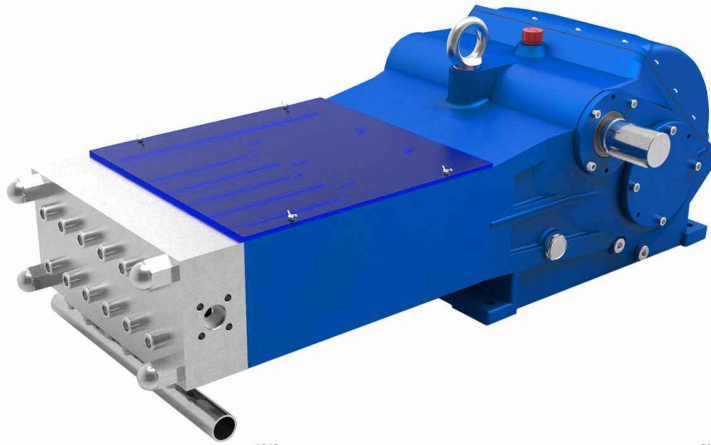


# F90

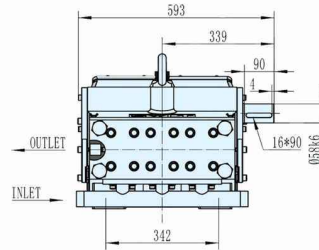
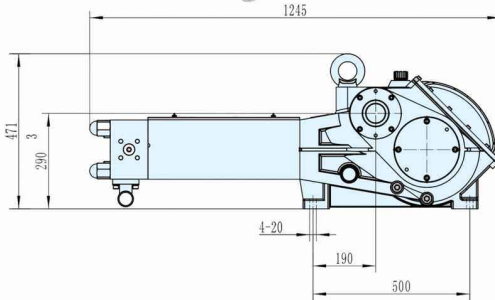


Plunger Diameter	Gear Ratio (Input Speed)			Crank Shaft	Required Drive	Nominal Flow Rate		Maximum Permissible Working Pressure	
	mm	1500	1800			2100	RPM	KW	USG pm
P18	2.75			530	90	7.9	30	20,000	1,400
P20	2.75			530	90	9.2	35	17,000	1,200
P22	2.75			530	90	11.9	45	15,000	1,000
P26	2.75			530	90	16.6	63	10,000	700

Netweight:400KG Inlet Port:G 2" Outlet Port: M30 \* 2



F132G

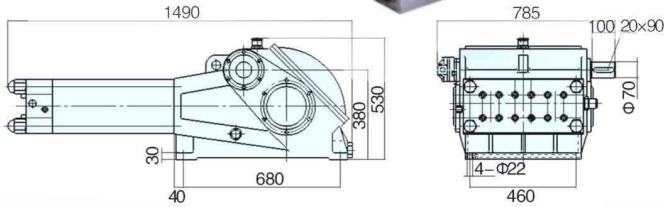


Plunger Diameter	Gear Ratio (Input Speed)			Crank Shaft	Required Drive	Nominal Flow Rate		Maximum Permissible Working Pressure	
	mm	1480	1800			2100	RPM	KW	USG pm
P18	3.16			468	90	7.9	30	21,000	1,500
P20	3.16			468	110	9.2	35	21,000	1,500
P22	3.16			468	132	10.6	40	21,000	1,500
P24	3.16			468	160	13.2	50	21,000	1,500
P26	3.16			468	160	15.9	60	21,000	1,500

Netweight:560KG Inlet Port: ZG 1-1/2" Outlet Port: M30\*2



# F200



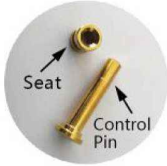
Plunger Diameter	Gear Ratio (Input Speed)			Crank Shaft	Required Drive	Nominal Flow Rate		Maximum Permissible Working Pressure		
	mm	1450	1800			2100	RPM	KW	USG pm	L/MIN
P22	4.04				366	160	13.2	50	6,000	800
P24	4.04				366	200	15.9	60	23,000	1,600
P26	4.04				450	200	18.5	70	20,000	1,400
P28	4.04				366	200	21.1	80	17,000	1,200
P30	4.04				366	200	23.8	90	15,000	1,000
P32	4.04				366	200	27.7	105	3,000	900
P34	4.04				366	200	31.7	120	10,000	700

Netweight:753KG Inlet Port:ZG 1-1/2" Outlet Port:G1-3/8"



## A C HIGH PRESSURE SPRAY GUN

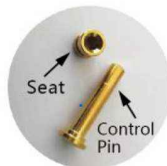
### C.1 SG2800B (Dump Style)



Technical Specifications:

Max. Operating pressure: 2800bar	Max. Flow rate: 50 l/min
Lance type: 9/16"	Lance length: 750 mm
Weight: approx.6.6kg	
Connection thread: 1-1/8UNF female Or custom-made as per client requirement	

### C.2 SG1600B (Dump Style)



Technical Specifications:

Max. Operating pressure: 1600bar	Max. Flow rate: 80 l/min
Lance type: 9/16"	Lance length: 750 mm
Weight: approx.6.0kg	
Connection thread: M24*1.5 Or custom-made as per client requirement	

### C.3 SG1600CA (Shut In Style)



Technical Specifications:

Max. Operating pressure: 1600bar	Max. Flow rate: 80 l/min
Lance type: 9/16"	Lance length: 750 mm
Weight: approx.5.8kg	
Connection thread: M24*1.5 Or custom-made as per client requirement	



### C.4 SG1000 (Dump Style)



Technical Specifications:

Max. Operating pressure: 1000bar	Max. Flow rate: 80l/min
Lance type: 9/16-18	Length: 1250~1500mm
Weight: approx. 4.8kg	
Connection thread: 9/16-18 female Or custom-made as per client requirement	

### C.5 SG1000CA (Shut In Style)



Technical Specifications:

Max. Operating pressure: 1000bar	Max. Flow rate: 80l/min
Lance type: M24*1.5	Length: 1250~1500mm
Weight: approx. 4.5kg	
Connection thread: M14*1.5 female Or custom-made as per client requirement	

### C.6 SG500 (Shut In Style)



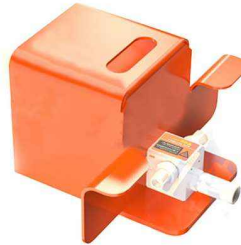
Technical Specifications:

Max. Operating pressure: 500bar	Max. Flow rate: 80l/min
Lance type: M24*1.5	Length: 1250~1500mm
Weight: approx. 3.0kg	
Connection thread: M14*1.5 female Or custom-made as per client requirement	



## A D HIGH PRESSURE FOOT VALVE

### D.1 FV3000B (Dump Style)



Technical Specifications:

Max. Operating pressure: 3000bar
Max. Flow rate: 80l/min
Weight: 14Kg
Connection thread: 1/1/8 UNF female Or custom-made as per client requirement

### D.2 FV1600B (Dump Style)



Technical Specifications:

Max. Operating pressure: 2800bar
Max. Flow rate: 80l/min
Weight: 13.5Kg
Connection thread: M24*1.5 Or custom-made as per client requirement

### D.3 FV1500C (Shut In Style)



Technical Specifications:

Max. Operating pressure: 2800bar
Max. Flow rate: 80l/min
Weight: 13.5Kg
Connection thread: M24*1.5 Or custom-made as per client requirement



**C.4** FV1000B (Dump Style)



Technical Specifications:

Max.Operating pressure:1000bar
Max.Flow rate: 80l/min
Weight:12Kg
Connection thread:M24*1.5 Or custom-made as per client requirement

**C.5** FV1000C (Shut In Style)



Technical Specifications:

Max.Operating pressure:2800bar
Max.Flow rate: 80l/min
Weight:12Kg
Connection thread:M24*1.5 Or custom-made as per client requirement





# A E SELF-ROTATING NOZZLES DESIGNED FOR INTERNAL TUBE CLEANING

## E.1 RBD NOZZLES

Type: RBD 1 1/4/17/20/25



RBD-Nozzle inlet connection thread:  
Inlet Thread and Code:

Model	Flow Range	Inlet Connection	O.D.	Length
<b>RBD11</b>	6~29 L/min	M8*1	11mm	92mm
<b>Pressure</b>		M8		
500~1500 Bar		M7		
		1/4-28LH		
		1/4-28RH		
<b>RBD14</b>	6~34 L/min	M8*1	14mm	104mm
<b>Pressure</b>		M8		
500~1500 Bar		M10*1		
		1/8 BSPP		
		1/4-28LH		
		1/4-28RH		
		3/8-24LH		
	3/8-24RH			
<b>RBD17</b>	7~46 L/min	1/8 BSPP	17mm	118mm
<b>Pressure</b>		3/8-24LH		
500~1500 Bar		3/8-24RH		
		M10*1		
		1/4 NPT		
<b>RBD20</b>	7~53 L/min	M10*1	20mm	132mm
<b>Pressure</b>		1/4 BSP		
500~1500 Bar		1/4 NPT		
		9/16-18LH		
		9/16-18RH		
<b>RBD27</b>	8~62 L/min	M10*1	25mm	149mm
<b>Pressure</b>		1/4 BSP		
500~1500 Bar		1/4 NPT		
		3/8 BSPP		
		9/16-18LH		
		9/16-18RH		
		M20*1.5		



2jet Polisher connected with rigid lance ONLY



2+3 backjets Polisher



5jet Universal connected with rigid lance ONLY



5+3 backjets Universal





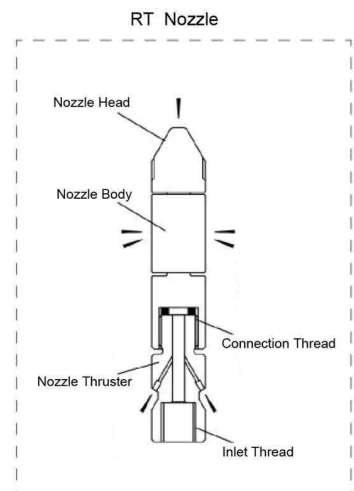
## E.2 RT NOZZLES

Type:RT 11/13/15/20/25



RT-Nozzle inlet connection thread:  
Inlet Therad and Code:

Model	Flow Range	Inlet Connection	O.D.	Length
<b>RT 11</b>	9~22 L/min	M8*1	11mm	65mm
<b>Pressure</b>		M8		
500~1200 Bar		M7		
		1/4-28LH		
		1/4-28RH		
<b>RT13</b>	10~23 L/min	M8*1	13mm	71mm
<b>Pressure</b>		M8		
500~1200 Bar		M10*1		
		1/8 BSPP		
		1/4-28LH		
		1/4-28RH		
	3/8-24LH			
	3/8-24RH			
<b>RT15</b>	11~23 L/min	1/8 BSPP	15mm	79mm
<b>Pressure</b>		3/8-24LH		
500~1200 Bar		3/8-24RH		
		M10*1		
<b>RT20</b>	12~37 L/min	M10*1	20mm	90mm
<b>Pressure</b>		1/4 BSP		
500~1200 Bar		1/4 NPT		
		9/16-18LH		
		9/16-18RH		
<b>RT25</b>	12~47 L/min	M10*1	25mm	104mm
<b>Pressure</b>		1/4 BSP		
500~1200 Bar		1/4 NPT		
		3/8 BSPP		
		9/16-18LH		
		9/16-18RH		
		M20*1.5		





## F SURFACE CLEANING AND PREPARATION

### A RWT-OS16-2



Max.operating pressure: 1600bar

Flow range:10~30l/min

Rotation Speed: 500~2500 rpm

Diameter:φ 37mm

Total length: 168mm

Approx.weight:0.78Kg

Connection thread: M20\*1.5 female Or custom-made as per client requirement

Sapphire nozzle: 2\*M10\*1.5

### A RWT-OS18-4



Max.operating pressure: 1800bar

Flow range:15~36l/min

Rotation Speed: 500~2500 rpm

Diameter:φ 49mm

Total length: 200mm

Approx.weight:1.52Kg

Connection thread: 1-1/8UNF female Or custom-made as per client requirement

Sapphire nozzle: 4\*M10\*1.5

### A RWT-OF28-4



Max.operating pressure: 2800bar

Flow range:10~18l/min

Rotation Speed: 800~2500 rpm

Diameter:φ 49mm

Total length: 189mm

Approx.weight:1.30Kg

Connection thread: 1-1/8 UNF female Or custom-made as per client requirement

Sapphire nozzle: 4\*M10\*1.5

### A RWT-OF30-3



Max.operating pressure: 3000bar

Flow range:10~20l/min

Rotation Speed: 500~2500 rpm

Diameter:φ 62mm

Total length: 208mm

Approx.weight:1.65Kg

Connection thread: 1-1/8 UNF female Or custom-made as per client requirement

Sapphire nozzle: 3\*M10\*1.5



**A RWT-OF30-4**



Max.operating pressure: 3000bar

Flow range:10~20l/min

Rotation Speed: 500~2500 rpm

Diameter:φ 62mm

Total length: 208mm

Approx.weight:1.65Kg

Connection thread: 1-1/8 UNF female Or custom-made as per client requirement

Sapphire nozzle: 4\*M10\*1.5

**A RWT-OF32-4**



Max.operating pressure: 3200bar

Flow range:10~20l/min

Rotation Speed: 500~2500 rpm

Diameter:φ 41mm

Total length: 220mm

Approx.weight:1.50Kg

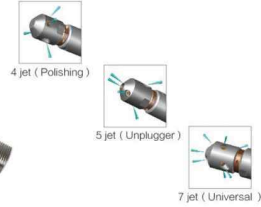
Connection thread: 1-1/8 UNF female Or custom-made as per client requirement

Sapphire nozzle: 4\*7/16-20UNF



## A G INTERNAL PIPE CLEANING

### G.1 S22 / S29 / S35 / S44



Model	Pressure	Max Flow	Rotation Speed	Inlet Connect	Head Option	Diameter	Length
S22-20	2,000Bar	42 L/min	50~1,500 rpm	M18*1.5 Female	4 jets / 5 jets / 7 jets	22mm	137mm
S22-28	2,800Bar	42 L/min	50~1,500 rpm	M18*1.5 Female	4 jets / 5 jets / 7 jets	22mm	137mm
S29-20	2,000Bar	42 L/min	50~1,500 rpm	M20*1.5 Female	4 jets / 5 jets / 7 jets	29mm	156mm
S29-28	2,800Bar	42 L/min	50~1,500 rpm	M20*1.5 Female	4 jets / 5 jets / 7 jets	29mm	156mm
S35-16	1,600Bar	42 L/min	50~1,500 rpm	M24*1.5 Female	4 jets / 5 jets / 7 jets	35mm	150mm
S44-20	2,000Bar	42 L/min	50~1,500 rpm	1-1/8UNF Female	4 jets / 5 jets / 7 jets	44mm	183mm

### G.2 S45 / S40 / S55



Model	Pressure	Max Flow	Rotation Speed	Inlet Connect	Head Option	Diameter	Length
S45-15	1,500Bar	75 L/min	50~1,500 rpm	M16*1.5 Female	4*1/4-28UNF	45mm	88mm
S40-20	2,000Bar	75 L/min	50~1,500 rpm	1-1/8UNF Female	4*M4	40mm	120mm
S55-20	2,000Bar	75 L/min	50~1,500 rpm	1-1/8UNF Female	4*1/4-28UNF	55mm	156mm

### G.3 FC55 / FC70 / FC90 / SR88



Model	Pressure	Max Flow	Rotation Speed	Inlet Connect	Head Option	Diameter
FC55-16	1,600Bar	75 L/min	200~1,500 rpm	1-1/8UNF Female	4 jets / 5 jets / 6 jets / 7 jets	55mm
FC55-30	3,000Bar	42 L/min	200~1,500 rpm	1-1/8UNF Female	4 jets / 5 jets / 6 jets / 7 jets	55mm
FC70-10	1,000Bar	168 L/min	200~1,500 rpm	1-1/8UNF Female	4 jets / 5 jets / 6 jets / 7 jets	70mm
FC70-20	2,000Bar	117 L/min	200~1,500 rpm	1-1/8UNF Female	4 jets / 5 jets / 6 jets / 7 jets	70mm
FC70-30	3,000Bar	75 L/min	200~1,500 rpm	1-1/8UNF Female	4 jets / 5 jets / 6 jets / 7 jets	70mm
FC90-12	1,200Bar	230 L/min	200~1,500 rpm	1-1/8UNF Female	4 jets / 5 jets / 6 jets / 7 jets	90mm
FC90-20	2,000Bar	168 L/min	200~1,500 rpm	1-1/8UNF Female	4 jets / 5 jets / 6 jets / 7 jets	90mm
FC90-30	3,000Bar	117 L/min	200~1,500 rpm	1-1/8UNF Female	4 jets / 5 jets / 6 jets / 7 jets	90mm
SR88-10	1,000Bar	168 L/min	200~1,500 rpm	1-1/8UNF Female	4 jets / 5 jets / 6 jets / 7 jets	88mm
SR88-20	2,000Bar	117 L/min	200~1,500 rpm	1-1/8UNF Female	4 jets / 5 jets / 6 jets / 7 jets	88mm
SR88-30	3,000Bar	75 L/min	200~1,500 rpm	1-1/8UNF Female	4 jets / 5 jets / 6 jets / 7 jets	88mm



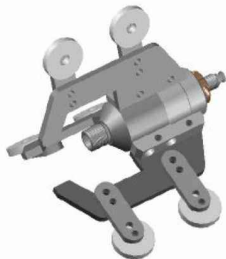
## G.4 BENDING PIPE CLEANING



Model	Pressure	Max Flow	Rotation Speed	Inlet Connect	Head Option	Diameter	Length
W16M3	1,600Bar	58 L/min	200~1,500 rpm	M24*1.5 Female	7 jets	68mm	148mm
W16MS	1,600Bar	58 L/min	200~1,500 rpm	M24*1.5 Female	4 jets	68mm	140mm
W16L3	1,600Bar	117 L/min	200~1,500 rpm	M24*1.5 Female	7 jets	68mm	156mm
W16LS	1,600Bar	117 L/min	200~1,500 rpm	M24*1.5 Female	4 jets	78mm	148mm
W16XL3	1,600Bar	168 L/min	200~1,500 rpm	M36*2.0 Female	7 jets	100mm	168mm
W16XLS	1,600Bar	168 L/min	200~1,500 rpm	M36*2.0 Female	4 jets	100mm	162mm
W28M3	2,800Bar	42 L/min	200~1,500 rpm	1-1/8UNF Female	7 jets	68mm	145mm
W28MS	2,800Bar	42 L/min	200~1,500 rpm	1-1/8UNF Female	4jets	68mm	138mm
W28L3	2,800Bar	75 L/min	200~1,500 rpm	1-1/8UNF Female	7 jets	78mm	148mm
W28LS	2,800Bar	75 L/min	200~1,500 rpm	1-1/8UNF Female	4 jets	78mm	139mm
W28XL3	2,800Bar	117 L/min	200~1,500 rpm	1-1/8UNF Female	7 jets	100mm	158mm
W28XLS	2,800Bar	117 L/min	200~1,500 rpm	1-1/8UNF Female	4 jets	100mm	163mm

### FALCON SERIES CENTRALIZERS:

Type: A



Type: B



Type A: suitable for i/d 130~400 ( total length: approx. 180 mm weight: 4.50 kg );

Type B: suitable for i/d 400~800 ( total length: approx. 600 mm weight: 26.0 kg );

**A H TANK CLEANING NOZZLE****H.1 3DUP-1600**

Model	3DUP-1600
Max Working Pressure	1600 Bar
Flow Rate	30~100 L/min
Cleaning Radium	3 m
Nozzle Orifice	1~3 mm * 2 Pcs
Working Temperature	0~40 °C / 40~100 °C
Material	304 Stainless Steel
Cleaning Path	512 Routes
Weight	9.15Kgs
Dimension	263.60 mm L * φ80 mm
Inlet Connection	M24 * 1.5
Manhole Diameter	140mm at least
Cleaning Period	2~15 minutes

**H.2 3DUP-500**

Model	3DUP-500
Max Working Pressure	500 Bar
Flow Rate	20~200 L/min
Cleaning Radium	3 m
Nozzle Orifice	1~3 mm * 2 Pcs
Working Temperature	0~40 °C / 40~100 °C
Material	304 Stainless Steel
Cleaning Path	512 Routes
Weight	9.15Kgs
Dimension	263.60 mm L * φ80 mm
Inlet Connection	0.5 Inch
Manhole Diameter	140mm at least
Cleaning Period	2~15 minutes

3D nozzle is designed for small and midsize vessel and tank cleaning. It is self-rotation, driven by water jetting, covering internal surface of vessel or tank in 360°. It is high pressure water cleaning, up to 1600bar, more water saving, better cleaning performance and higher cleaning efficiency. It does not need any chemical ingredient, no mechanical force, less cleaning time, less cost for your cleaning jobs.

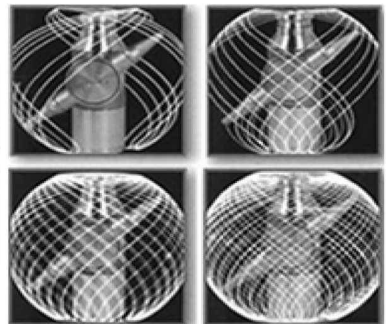
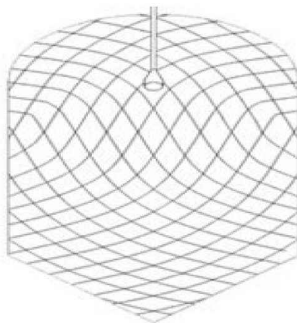
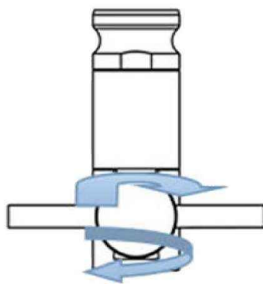


### H.3 3DP-10



Model	3DP-10
Max Working Pressure	<50 Bar
Flow Rate	210~390 L/min
Cleaning Radius	10~15m
Nozzle Orifice	1~3 mm * 2 Pcs
Working Temperature	0~60 °C / 60~220 °C
Material	316 Stainless Steel
Cleaning Path	126 Routes
Weight	4.50 Kgs
Dimension	263.60 mm L * φ80 mm
Inlet Connection	M24 * 1.5
Manhole Diameter	-----
Cleaning Period	5~15 minutes

3D nozzle is designed for big vessel and tank cleaning. It is self-rotation, driven by water jetting, covering internal surface of vessel or tank in 360°. Cleaning radius is up to 10m. It does not need any chemical ingredient, no mechanical force, fast cleaning, water saving, high cleaning performance and efficiency.





## I Sewer Cleaning Nozzles

**A** Parrot Nozzle **6A01**

JET PATTERN	0/1 Front jet 4/5 back jets
PIPE COVERAGE RANGE	150~600 mm
WORKING PRESSURE	<300 Bar
FLOW RAGE	>135 l/min
INLET PORT	ZG1"
NOZZLE TIPS	Alloy Steel
DIAMETER(OD*HEIGHT)	φ60*80 mm
WEIGHT	1 KG

**A** Poseidon Nozzle **6B01**

JET PATTERN	4 Front jets 5 back jets
PIPE COVERAGE RANGE	150~1000 mm
WORKING PRESSURE	<300 Bar
FLOW RAGE	>135 l/min
INLET PORT	ZG1"
NOZZLE TIPS	Ceramics
DIAMETER(OD*HEIGHT)	φ90*190 mm
WEIGHT	3.8 KG

**A** Skylark Nozzle **6C01**

JET PATTERN	1Front jet 8 back jets
PIPE COVERAGE RANGE	150~1000 mm
WORKING PRESSURE	<300 Bar
FLOW RAGE	>135 l/min
INLET PORT	ZG1"
NOZZLE TIPS	Ceramics
DIAMETER(OD*HEIGHT)	φ100*180 mm
WEIGHT	6.5 KG

**A** Teenie Nozzle **6D01**

JET PATTERN	1Front jet 12 back jets
PIPE COVERAGE RANGE	150~1200 mm
WORKING PRESSURE	<300 Bar
FLOW RAGE	>170 l/min
INLET PORT	ZG1"
NOZZLE TIPS	Ceramics
DIAMETER(OD*HEIGHT)	φ110*190 mm
WEIGHT	9.3 KG





## A Rainbow Nozzle 6E01



JET PATTERN	1 Front jet 16 back jets
PIPE COVERAGE RANGE	150~1200 mm
WORKING PRESSURE	<300 Bar
FLOW RAGE	>170 l/min
INLET PORT	ZG1"
NOZZLE TIPS	Ceramics
DIAMETER(OD*HEIGHT)	φ120*200 mm
WEIGHT	12 KG

## A Floating Nozzle 6F01



JET PATTERN	0 Front jet 5 back jets
PIPE COVERAGE RANGE	150~600 mm
WORKING PRESSURE	<300 Bar
FLOW RAGE	>170 l/min
INLET PORT	36*2 A Type
NOZZLE TIPS	Alloy Steel
DIAMETER(OD*HEIGHT)	φ90*255 mm
WEIGHT	1.5 KG

## A Goku Nozzle 6G01



JET PATTERN	1 Front jet 4 back jets
PIPE COVERAGE RANGE	200~1200 mm
WORKING PRESSURE	<300 Bar
FLOW RAGE	>170 l/min
INLET PORT	ZG1"
NOZZLE TIPS	Ceramics
DIAMETER(OD*HEIGHT)	φ160*290 mm
WEIGHT	9.0 KG

## A Hato Nozzle 6H01



JET PATTERN	4 Front jets 6 back jets
PIPE COVERAGE RANGE	150~1200 mm
WORKING PRESSURE	<300 Bar
FLOW RAGE	>215 l/min
INLET PORT	ZG1"
NOZZLE TIPS	Ceramics
DIAMETER(OD*HEIGHT)	φ140*280 mm
WEIGHT	10 KG

**A** Pipa Nozzle **6J01**

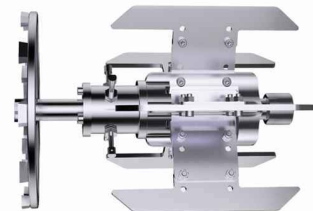
<b>JET PATTERN</b>	1 Front jet 6 back jets
<b>PIPE COVERAGE RANGE</b>	300~800 mm
<b>WORKING PRESSURE</b>	<300 Bar
<b>FLOW RAGE</b>	>170 l/min
<b>INLET PORT</b>	ZG1"
<b>NOZZLE TIPS</b>	Ceramics
<b>DIAMETER(OD*HEIGHT)</b>	φ100*150 mm
<b>WEIGHT</b>	5 KG

**A** Actinian Nozzle **6K01**

<b>JET PATTERN</b>	0 Front jet 12 back jets
<b>PIPE COVERAGE RANGE</b>	300~1200 mm
<b>WORKING PRESSURE</b>	<300 Bar
<b>FLOW RAGE</b>	>170 l/min
<b>INLET PORT</b>	ZG1"
<b>NOZZLE TIPS</b>	Ceramics
<b>DIAMETER(OD*HEIGHT)</b>	450*240*230 mm
<b>WEIGHT</b>	15 KG

**A** Mangosten Nozzle **6L01**

<b>JET PATTERN</b>	0 Front jet 9 back jets
<b>PIPE COVERAGE RANGE</b>	300~600 mm
<b>WORKING PRESSURE</b>	<300 Bar
<b>FLOW RAGE</b>	>170 l/min
<b>INLET PORT</b>	ZG1"
<b>NOZZLE TIPS</b>	Ceramics
<b>DIAMETER(OD*HEIGHT)</b>	φ300*590 mm
<b>WEIGHT</b>	25 KG

**A** Baolian Nozzle **6M01**

<b>JET PATTERN</b>	0 Front jets 9 back jets
<b>PIPE COVERAGE RANGE</b>	300~500 mm
<b>WORKING PRESSURE</b>	<300 Bar
<b>FLOW RAGE</b>	>215 l/min
<b>INLET PORT</b>	ZG1"
<b>NOZZLE TIPS</b>	Ceramics
<b>DIAMETER(OD*HEIGHT)</b>	300*650 mm
<b>WEIGHT</b>	47 KG



**A PG1 Nozzle 6N01**

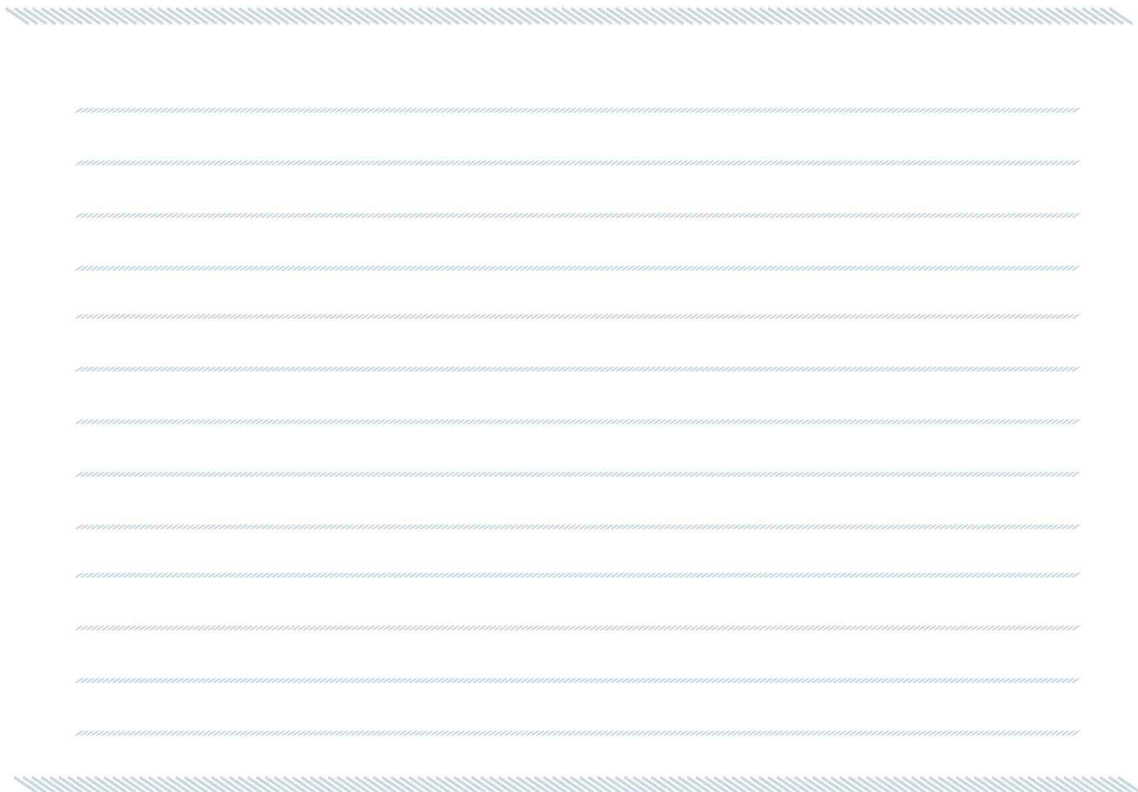


<b>WORKING PRESSURE</b>	102~350BAR
<b>FLOW RANGE</b>	190~300 l/min
<b>SPEED</b>	100~300rpm
<b>TRACTION</b>	450-623N
<b>NOZZLE</b>	G1/8
<b>INLET PORT</b>	G1
<b>DIAMETER</b>	122mm
<b>LENGTH</b>	231mm
<b>WEIGHT</b>	4.75 KG

**A PG3/4 Nozzle 6P01**



<b>WORKING PRESSURE</b>	60~350BAR
<b>FLOW RANGE</b>	60~200 l/min
<b>SPEED</b>	50~400rpm
<b>TRACTION</b>	200-400N
<b>NOZZLE</b>	G1/8
<b>INLET PORT</b>	G3/4
<b>DIAMETER</b>	86mm
<b>LENGTH</b>	190mm
<b>WEIGHT</b>	3.1 KG





# A J NOZZLE PARTS



HARDENED STEEL NOZZLES



NOZZLE HOLDERS



SAPPHIRE NOZZLES



Three-way connection



Four-way connection







PERFORMANCE ( M10\*1.5、 1/4-28UNF、 M4 SAPPHIRE NOZZLES )

Nozzles ϕ d mm	200 bar L/min	500 bar L/min	750 bar L/min	1000 bar L/min	1500 bar L/min	2000 bar L/min	2500 bar L/min	3000 bar L/min
0.10	0.064	0.1	0.122	0.141	0.171	0.196	0.217	0.237
0.125	0.1	0.157	0.191	0.22	0.267	0.306	0.34	0.37
0.15	0.143	0.226	0.275	0.316	0.385	0.441	0.489	0.532
0.175	0.197	0.309	0.377	0.434	0.527	0.604	0.671	0.73
0.20	0.255	0.401	0.489	0.563	0.684	0.784	0.87	0.946
0.25	0.402	0.632	0.771	0.887	1.078	1.235	1.371	1.492
0.30	0.574	0.903	1.101	1.266	1.538	1.763	1.957	2.13
0.35	0.808	1.27	1.549	1.781	2.165	2.481	2.754	2.997
0.40	1.026	1.614	1.969	2.264	2.751	3.153	3.5	3.808
0.45	1.301	2.046	2.495	2.869	3.486	3.996	4.436	4.827
0.50	1.638	2.577	3.143	3.614	4.391	5.032	5.587	6.079
0.55	1.982	3.118	3.802	4.373	5.313	6.089	6.76	7.356
0.60	2.343	3.685	4.494	5.168	6.28	7.197	7.99	8.694
0.65	2.769	4.355	5.311	6.107	7.421	8.505	9.442	10.274
0.70	3.2	5.034	6.139	7.06	8.578	9.831	10.914	11.876
0.75	3.7	5.82	7.098	8.162	9.918	11.367	12.619	13.731
0.80	4.261	6.702	8.174	9.399	11.421	13.09	14.531	15.812
0.85	4.81	7.566	9.228	10.611	12.893	14.777	16.404	17.85
0.90	5.401	8.495	10.36	11.913	14.475	16.59	18.417	20.04
0.95	6.094	9.584	11.689	13.441	16.332	18.718	20.78	22.611
1.00	6.93	10.9	13.293	15.287	18.574	21.288	23.632	25.751
1.10	8.39	13.19	16.08	18.5	22.48	25.76	28.6	31.12
1.20	9.99	15.72	19.17	22.04	26.78	30.7	34.08	37.08
1.30	11.73	18.45	22.5	25.87	31.43	36.02	39.99	43.52
1.40	13.6	21.39	26.09	30	36.46	41.78	46.38	50.47
1.50	15.61	24.56	29.95	34.44	41.85	47.96	53.24	57.94
1.60	17.16	27.94	34.08	39.19	47.61	54.57	60.58	65.92
1.70	20.05	31.54	38.47	44.24	53.75	61.6	68.39	74.42
1.80	22.24	34.98	42.66	49.06	59.61	68.32	75.84	82.53
1.90	25.05	39.4	48.05	55.26	67.14	76.95	85.43	92.96
2.00	27.76	43.66	53.25	61.23	74.4	85.27	94.66	103
2.10	30.6	48.13	58.7	67.5	82.02	94.01	104.36	113.56
2.20	35.95	56.54	68.95	79.29	96.35	110.42	122.58	133.39
2.30	39.19	61.64	75.17	86.45	105.04	120.38	133.64	145.42
2.40	42.67	67.12	81.85	94.13	114.37	131.08	145.52	158.34
2.50	46.3	72.83	88.82	102.13	124.1	142.23	157.9	171.81
2.60	50.08	78.77	96.06	110.47	134.23	153.84	170.78	185.83
2.70	54.1	84.95	103.6	119.13	144.75	165.9	184.17	200.4
2.80	58.08	91.35	111.41	128.12	155.67	178.41	198.06	215.52
2.90	62.3	98	119.51	137.43	166.99	191.39	212.46	231.59
3.00	66.67	104.87	127.9	147.07	178.71	204.81	227.37	247.41

Note: ①   <150N;   <250N;   >250N.

② Above M4、 1/4-28UNF sapphire nozzles Max. size is ϕ1.0mm

③ Above M10X1.5 sapphire nozzles Max. size is ϕ3.0mm



## PERFORMANCE ( M3、M4、1/8NPT、1/4NPT HARDENED STEEL NOZZLES )

Nozzles φ d mm	150 bar L/min	250 bar L/min	350 bar L/min	450 bar L/min	550 bar L/min	750 bar L/min	850 bar L/min	1000 bar L/min	1200 bar L/min	1400 bar L/min	1500 bar L/min
0.4	1.2	1.5	1.8	2.1	2.3	2.7	2.8	3.1	3.4	3.6	3.8
0.5	1.9	2.4	2.8	3.2	3.6	4.2	4.4	4.8	5.3	5.7	5.9
0.6	2.7	3.5	4.1	4.6	5.1	6.0	6.4	6.9	7.6	8.2	8.5
0.7	3.6	4.7	5.6	6.3	7.0	8.1	8.7	9.4	10.3	11.1	11.5
0.8	4.8	6.1	7.3	8.2	9.1	10.6	11.3	12.3	13.4	14.5	15.0
0.9	6.0	7.8	9.2	10.4	11.5	13.4	14.3	15.5	17.0	18.4	19.0
1.0	7.4	9.6	11.3	12.9	14.2	16.6	17.7	19.2	21.0	22.7	23.5
1.1	9.0	11.6	13.7	15.6	17.2	20.1	21.4	23.2	25.4	27.4	28.4
1.2	10.7	13.8	16.3	18.5	20.5	23.9	25.5	27.6	30.2	32.7	33.8
1.3	12.5	16.2	19.2	21.7	24.0	28.1	29.9	32.4	35.5	38.3	39.7
1.4	14.6	18.8	22.2	25.2	27.9	32.5	34.6	37.6	41.2	44.5	46.0
1.5	16.7	21.6	25.5	28.9	32.0	37.4	39.8	43.1	47.3	51.0	52.8
1.6	19.0	24.5	29.0	32.9	36.4	42.5	45.3	49.1	53.8	58.1	60.1
1.7	21.5	27.7	32.8	37.2	41.1	48.0	51.1	55.4	60.7	65.6	67.9
1.8	24.1	31.1	36.7	41.7	46.1	53.8	57.3	62.1	68.0	73.5	76.1
1.9	26.8	34.6	40.9	46.4	51.3	59.9	63.8	69.2	75.8	81.9	84.8
2.0	29.7	38.3	45.4	51.4	56.9	66.4	70.7	76.7	84.0	90.7	93.9
2.2	35.9	46.4	54.9	62.2	68.8	80.4	85.6	92.8	101.7	109.8	113.6
2.4	42.8	55.2	65.3	74.1	81.9	95.6	101.8	110.4	121.0	130.7	135.3
2.6	50.2	64.8	76.7	86.9	96.1	112.2	119.5	129.6	142.0	153.4	158.7
2.8	58.2	75.2	88.9	100.8	111.5	130.2	138.6	150.3	164.7	177.8	184.1
3.0	66.8	86.3	102.1	115.8	128.0	149.4	159.1	172.6	189.0	204.2	211.3
3.2	76.0	98.2	116.1	131.7	145.6	170.0	181.0	196.3	215.1	232.3	240.4
3.4	85.8	110.8	131.1	148.7	164.4	191.9	204.3	221.6	242.8	262.2	271.4
3.6	96.2	124.2	147.0	166.7	184.3	215.2	229.1	248.5	272.2	294.0	304.3
3.8	107.2	138.4	163.8	185.7	205.3	239.8	255.2	276.8	303.3	327.6	339.1
4.0	118.8	153.4	181.5	205.8	227.5	265.7	282.8	306.8	336.0	363.0	375.7

Note: ① Above M3-Max. Nozzles size is φ 0.8mm M4-Max. Nozzles size is φ 1.0mm

② 1/8NPT、1/4NPT-Max. Nozzles size is φ 4.0mm

# INDUSTRIAL PUMPING SOLUTION



All for your service needs!



## AOKPI INDYSTRY CO.,LTD.



PHONE:+86 185 0228 3968



FAX:+86(22) 8454 4686



EMAIL:info@aokpi.com



SKYPE:wendytojet



WHATSAPP:+86 185 0228 3968



WEBSITE:www.aokpi.com



ADDRESS:Xiaodian Development Zone,  
Beichen District, Tianjin, China.

